

PART OF THE NE 1/4, OF SEC. 34, T.6N., R.1W., S.L.B. & M.

DENVER PLACE ADDITION

BLOCKS 5 & 6

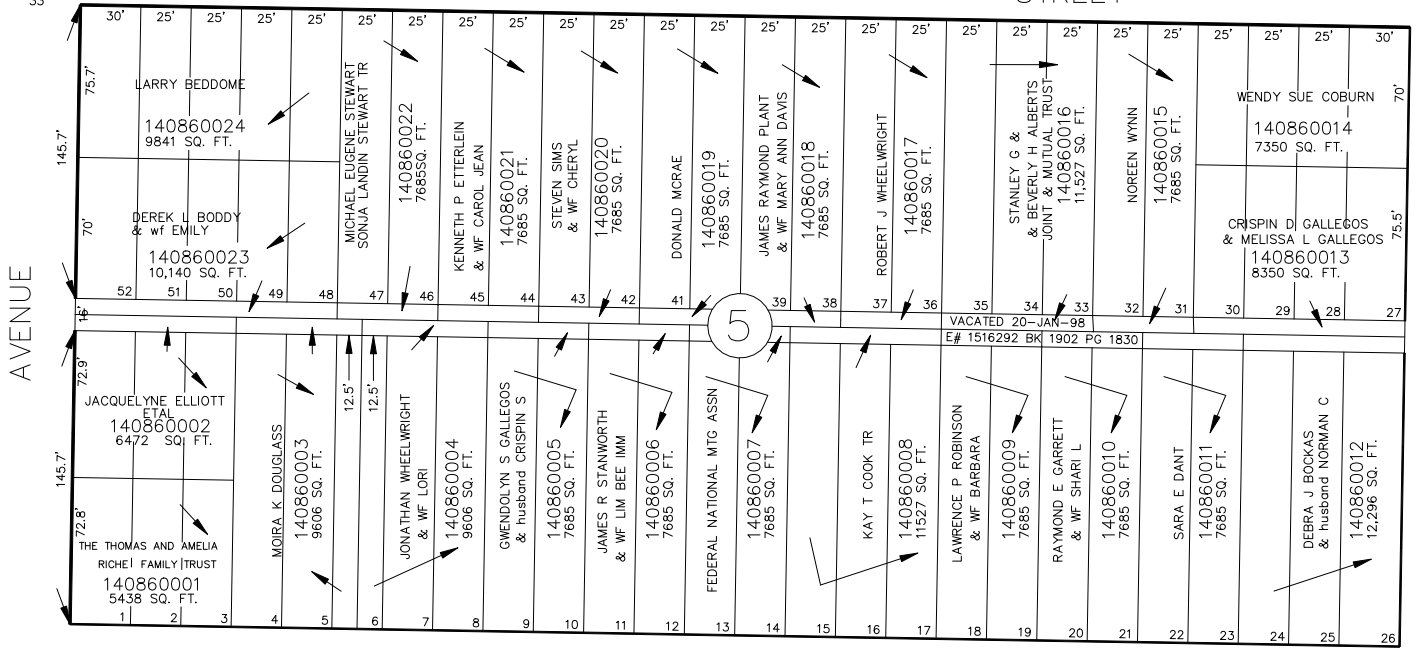
SEE BOOK 13, PAGE 126

IN OGDEN CITY, SCALE 1" = 50'

TAXING UNIT: 25

LAKE

STREET



SEE PAGE 85

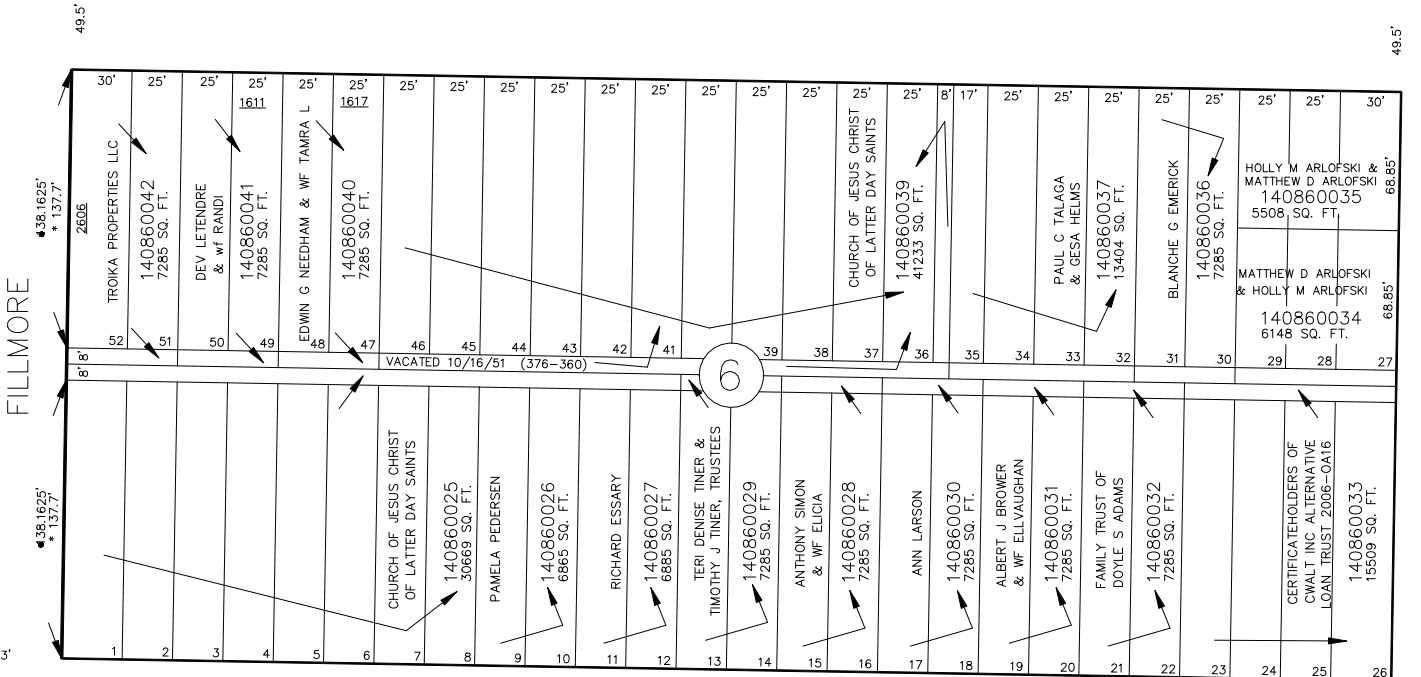
SEE PAGE 77

26TH

STREET

S 89°02' E

FILLMORE



OGDEN CITY ENG. DEPT. PLATS
ORIG. DED. PLAT

BINFORD

SEE PAGE 87

FOR COMPLETE ENG DATA SEE ORIGINAL DEDICATION PLAT IN BOOK 2, PAGE 11 OF RECORDS.

STREET

S 89°02' E

PIERCE